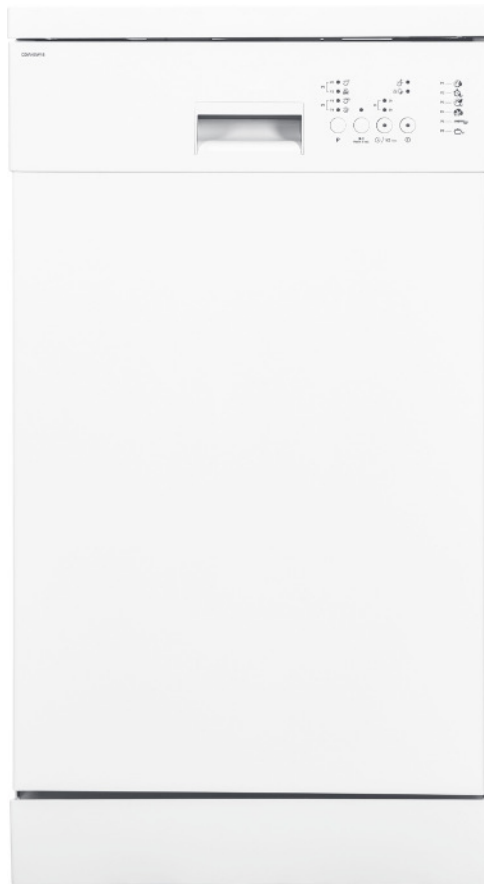


# ESSENTIALS

## Freestanding Dishwasher

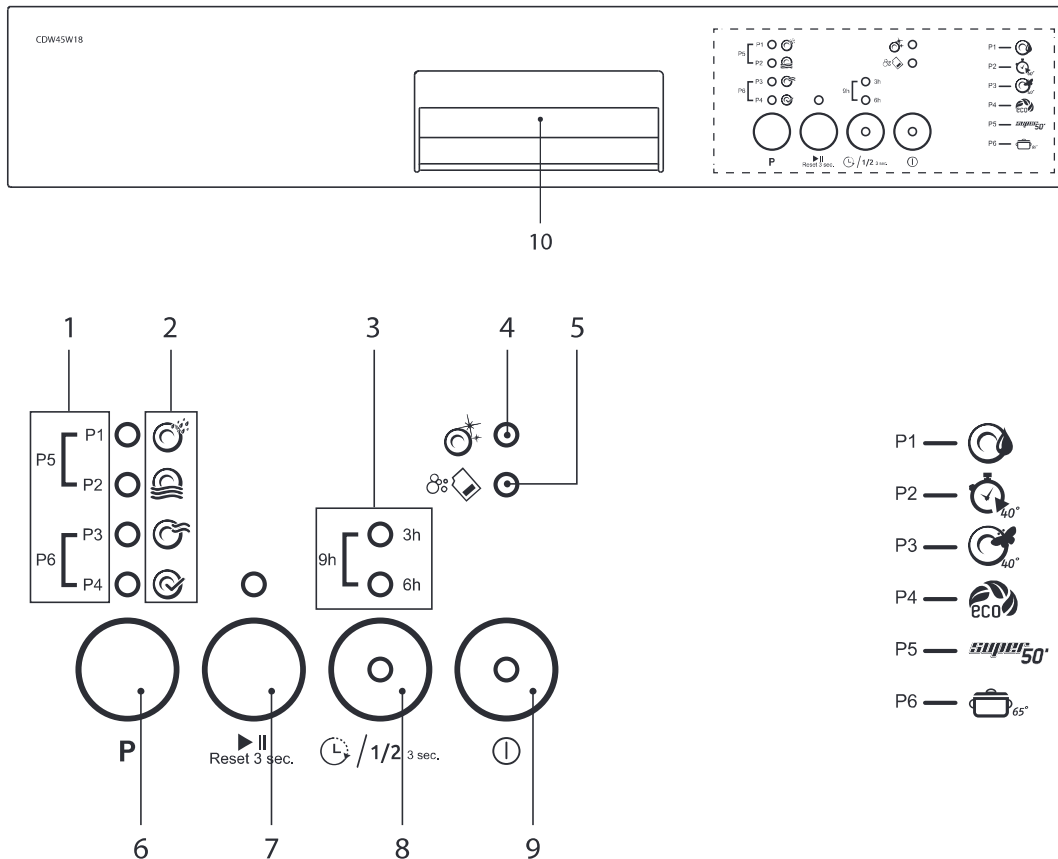
Installation / Instruction Manual

CDW45W18 / CDW45S18



Currys  PC World

## Control Panel



### 1. Program Settings Indicator

- The LED indicates which program you are selecting when pressing the **P** button.

### 2. Wash Cycle Status Indicator

- The LED indicates the progress of the wash cycle.  
Filling - Heating & Washing - Rinsing - Drying/Finished.

### 3. Delay Timer Indicator

- Shows if a delay timer is set for 3, 6 or 9 hours.

### 4. Rinse Aid Indicator

- Shows if rinse aid needs adding.

### 5. Salt Indicator

- Shows if salt needs adding.

### 6. Program Button

- Press to select one of the 6 wash programs.

### 7. Start/Pause and Reset Button

- Press to start or pause the wash cycle.
- Press and hold for 3 seconds to reset the wash cycle.

### 8. Timer Delay/ Half Load Button

- Press to select a timer delay of 3, 6 or 9 hours.
- Press and hold for 3 seconds to select half load.







### 9. ON/OFF Button

- Press to turn the dishwasher power on and off.


### 10. Door Handle

\* All images are for indication only; please refer to your individual unit for actual item.

# Wash Cycle Table

Programme	Cycle Selection Information	Process	Detergent Amount	Running Time (min.)	Energy Consumption (kWh)	Water Consumption (L)
<b>P1 Prewash</b> 	Pre-wash to rinse and loosen residue on soiled dishes. A wash programme is needed when Prewash is finished.	Pre-wash End	None	15	0.02	3.5
<b>P2 Quick</b> 	Coffee, milk, tea, cold meats, vegetables not dried on.	Wash (40°C) Cold Rinse Hot Rinse End	25g	30	0.72	10
<b>P3 Delicate</b> 	Coffee, milk, tea, cold meats, vegetables not dried on.	Prewash Wash (40°C) Cold Rinse Hot Rinse Dry End	25g	74 Half load 65	0.80 Half load 0.78	14.1 Half load 10.3
<b>P4 Eco</b> 	Coffee, milk, tea, cold meats, vegetables not dried on.	Prewash 50°C Wash Hot Rinse Dry End	25g	198 Half load 145	0.73 Half load 0.73	11.0
<b>P5 Super</b> 	Soups, sauces, pasta, eggs, pilaf, potato and oven dishes, fried foods.	Wash (65°C) Warm Rinse Hot Rinse End	25g	50 Half load 46	1.31 Half load 1.21	10.5
<b>P6 Intensive</b> 	Soups, sauces, pasta, eggs, pilaf, potato and oven dishes, fried foods.	Wash (45°C) Wash (65°C) Cold Rinse Hot Rinse Dry End	25g	117 Half load 96	1.50 Half load 1.32	17.6 Half load 13.8

The values declared above are the values obtained under laboratory conditions according to relevant standards. These values can change depending on conditions of product's use and environment (network tension, water pressure, water input temperature and environment temperature).

 Condensing dry technology

- Energy is saved by drying the dishes using the remaining heat after the last rinse cycle.
- Wash cycle times are extended due to this drying method.
- Some wash programmes do not have a drying function, please refer to the Wash Cycle Table for more details.

# Before Operating

## To Open The Door

- Pull the door handle.
- If the door is opened during operation, open the door slightly to avoid water spillage.



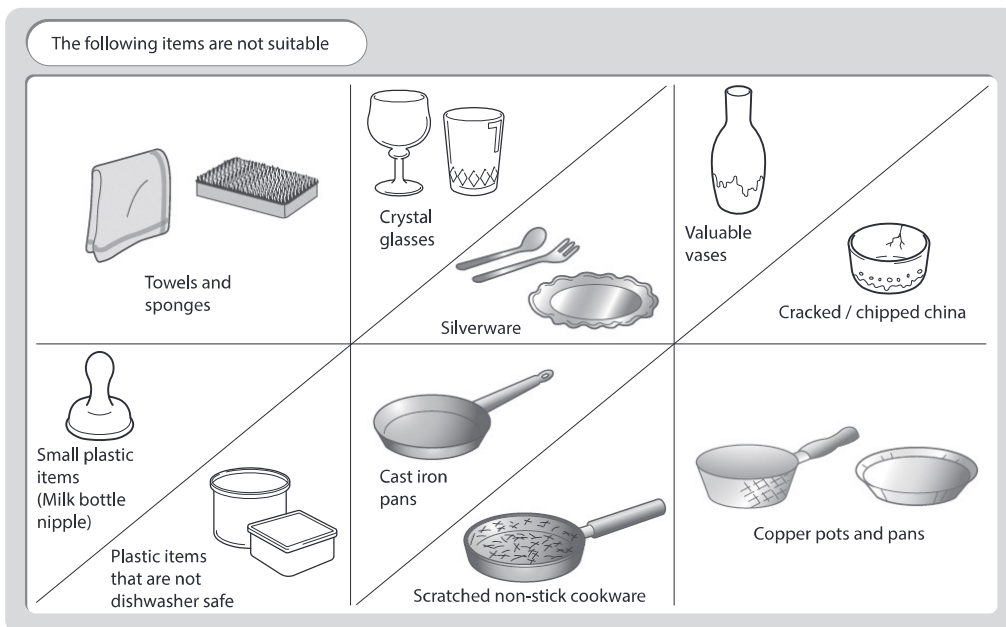
If the door is opened during operation, all functions are automatically interrupted.

## To Close The Door

- After loading the dishes, push the baskets fully into the dishwasher.
- Lift the door upwards and push until it clicks into position.
- Do not slam the dishwasher door.

## Items Not Suitable for Use in the Dishwasher

When purchasing new crockery and cutlery, please make sure they are dishwasher-proof. Some items are not suitable for dishwashers.



- Wooden cutlery and crockery or items with wooden parts may discolour and fade. The glue used in these items is not dishwasher-proof and wooden handles may come loose after being washed in a dishwasher.
- Craft items, antiques, valuable vases and decorative glassware are also not suitable for dishwashers.
- Plastic items (e.g. tupperware) which are not heat resistant may melt or loose shape due to the high temperature in the dishwasher.
- Copper, brass, tin and aluminium items may discolour or become matt.
- Clouding may occur on glasses and delicate glassware after frequent washing. Do not wash delicate glassware or glassware containing lead crystal, in a dishwasher. Wash delicate glassware by hand instead.
- Silver and aluminium parts have a tendency to discolour during washing. Residues like egg white, egg yolk and mustard often cause discolouring and staining on silver. Therefore, please clean the residues from silver immediately after use.

\* All images are for indication only; please refer to your individual unit for actual item.

# Adding Detergent Or Detergent Tablet

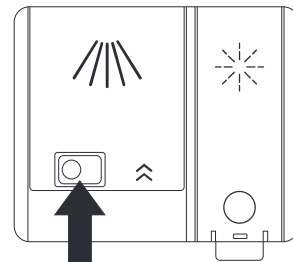
Only use detergents specifically designed for use in dishwashers. To be more environmentally friendly, please use no more than the correct amount of detergent. Fill the detergent dispenser with detergent power or tablet.



- Keep detergents and bleaches out of the reach of children.
- Irritating to eyes.
- Avoid contact with eyes. In case of contact with eyes, rinse immediately with plenty of water and seek medical advice.
- If swallowed, seek medical advice immediately.

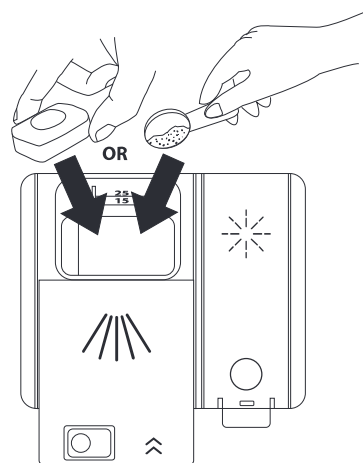
Please follow the steps below to fill the detergent dispenser.

1. Push the button on the lid of the detergent dispenser the flap with slide open.



Push to open

2. Fill the detergent dispenser with detergent powder or insert the detergent tablet. The marking indicates the filling level.



Slide to close

3. Slide the lid firmly so that it clicks into place.

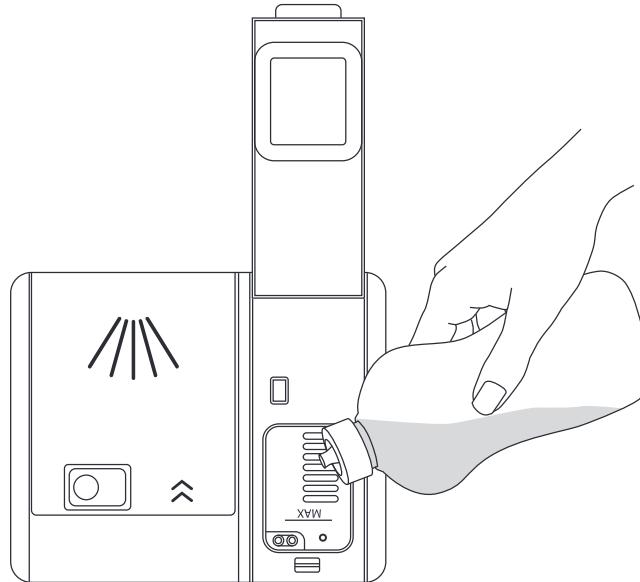
\* All images are for reference only; please refer to your individual unit for actual item.

## Adding Rinse Aid

Rinse aid helps to ensure water does not cling and leave marks on crockery during the drying phase and helps crockery dry faster after it has been washed. Only pour rinse aid that is for domestic dishwashers into the reservoir. This model is designed to use liquid rinse aids only.

Please follow the steps below to pour the rinse aid into the storage reservoir. The amount will dispense automatically.

1. Open the rinse aid compartment.
  2. Fill with the compartment with rinse aid up to the MAX level mark. Be careful not to overfill the reservoir. Wipe up any spills.
  3. Close the rinse aid compartment.
- Rinse aid warning light will illuminate when the reservoir is running out of rinse aid and requires refilling.



If the water hardness in your area is soft, you may not need rinse aid as it may cause white film to develop on your dishes.



If you decide to use a detergent tablet, you may not need to add rinse aid into the rinse aid reservoir.